

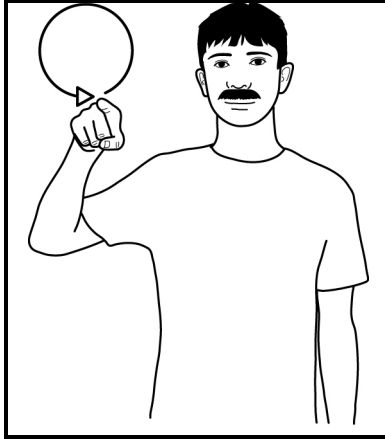
Summer in Britain

SUMMER



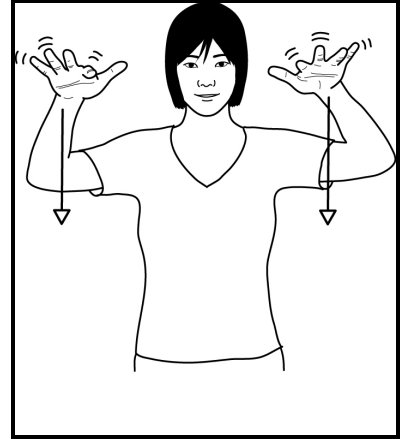
Working flat hand (palm back, pointing in/up) pulls away across forehead to working side, closing to fist (palm back, pointing up).

SUN



Working index hand (palm down, pointing forward) makes large outward circle by side of head.

RAIN



Open hands (palms down, pointing forward) move down from head height with fingers fluttering.

OLYMPICS

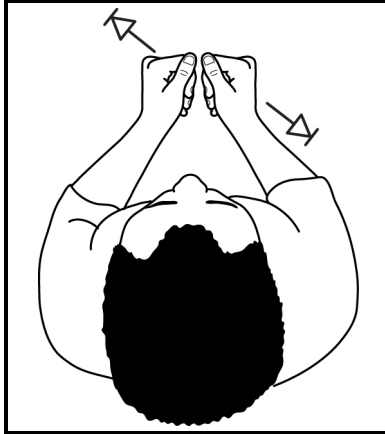


"O" hands linked with working hand palm down, pointing in and supporting hand palm up, pointing forward. Hands separate and come together changing places.

This can be repeated several times to indicate the Olympic rings.

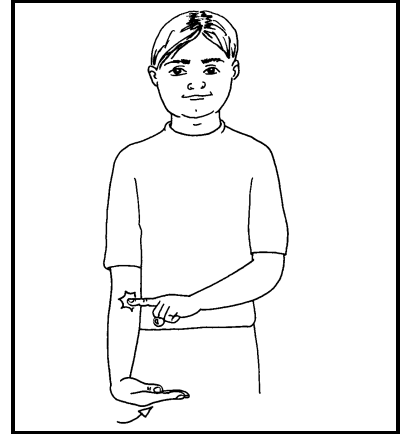
more signs for the Olympics can be found on our "Watching the Games" and "International Sports" posters

SPORTS



Closed hands together (palms in, pointing forward) separate sharply, working hand moves back, supporting hand moves forward.

CRICKET



Working flat hand (palm in, pointing down) in front of body, supporting index hand (palm down, pointing in) held against working forearm; working hand bends at wrist to palm up, pointing in).



The Signalong Group
Stratford House Waterside Court
Rochester Kent ME2 4NZ

0845 450 8422

www.signalong.org.uk

Communication skills for children and adults with
 speech, language and communication needs

Signing resources
 Visual communication resources
 Training
 Advice

Summer in Britain

A lot is happening in summer 2012. Whatever the weather, the Olympic Games will go ahead, and a whole summer of cricket is planned. With so much going on, there is the opportunity to develop communication skills for those who have difficulty following the words.

Signing is a simple way of reinforcing a verbal message, and in most cases there is a visual connection between the sign and the concept being conveyed. By using signs consistently a link can be established with the words and the whole communication process becomes easier.

Signalong has the largest illustrated sign vocabulary in Britain, adapted from British Sign Language for the needs and abilities of children and adults with speech, language and communication needs.

Signalong is made accessible by its approach to how the signs are formed, analysing them for handshape, orientation, placement and movement, supporting the descriptions with clear line drawings. This method enables families and practitioners to produce accurate signs relevant to their situation. Special vocabularies can be compiled on request.

The Signalong Group is a charity (no 1039788) which provides resources, training and free advice, and readily works with others in the field to promote communication skills for children and adults with speech, language and communication needs.

Training is provided both directly by the charity and through its national network of registered tutors. For information about courses, or becoming a trainer, please contact Sarah on 0845 450 8424, email sbissett@signalong.org.uk.

For information about Signalong resources please go to our website at www.signalong.org.uk or call 0845 450 8422 to request a catalogue