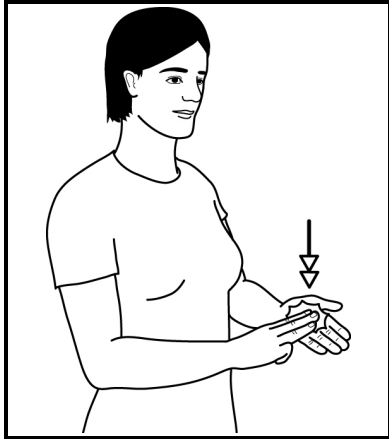


March: Mothers Day & Easter

MOTHER



Make letter shape "M" twice.

DAY

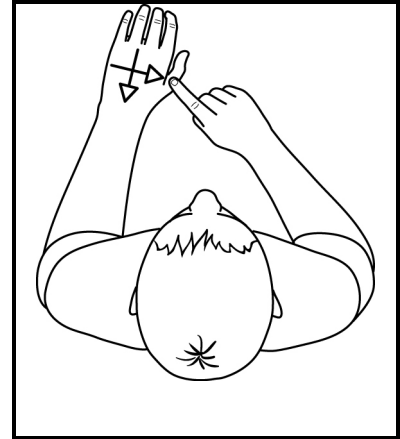


Flat hands (palms back, pointing in/up), in front of face, move out in small arc.

Mother's Day:

sign "mother + "day"

EASTER



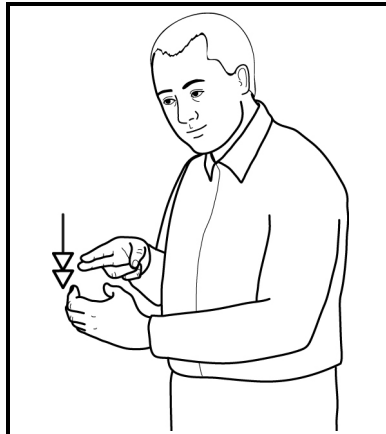
Supporting relaxed hand (palm down); working index draws cross-shape on back of supporting hand.

CHOCOLATE



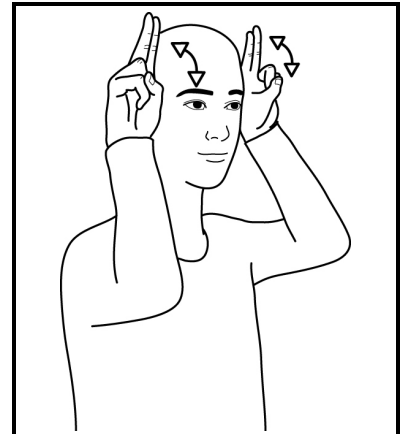
Working "R" hand (palm in, pointing up) makes inward circle on chin.

EGG



Supporting full "C" hand (palm in, pointing forward); working "N" hand (palm in, pointing forward) mimes tapping top of egg twice.

BUNNY



"N" hands (palms forward, pointing up) at either side of head, fingers flex forwards and back.

©SIGNALONG



The Signalong Group
Stratford House Waterside Court
Rochester Kent ME2 4NZ

0845 450 8422

www.signalong.org.uk

Communication skills for children and adults with
speech, language and communication needs

Signing resources
Visual communication resources
Training
Advice

March: Mothers Day & Easter

March is a time for honouring mothers and motherhood as Mothers Day is on the 10th of March. Make sure you show your appreciation to your mother on this special day. March is also a time for eating chocolate eggs, which are provided by the Easter Bunny as Easter Sunday is on the 31st of March. If there is any interest in signs regarding the religious side of Easter, there is a Signalong manual called "Being With God" which has appropriate vocabulary.

Signing is a simple way of reinforcing a verbal message, and in most cases there is a visual connection between the sign and the concept being conveyed. By using signs consistently a link can be established with the words and the whole communication process becomes easier.

Signalong has the largest illustrated sign vocabulary in Britain, adapted from British Sign Language for the needs and abilities of children and adults with speech, language and communication needs.

Signalong is made accessible by its approach to how the signs are formed, analysing them for handshape, orientation, placement and movement, supporting the descriptions with clear line drawings. This method enables families and practitioners to produce accurate signs relevant to their situation. Special vocabularies can be compiled on request.

The Signalong Group is a charity (no 1039788) that provides resources, training and free advice, and readily works with others in the field to promote communication skills for children and adults with speech, language and communication needs.

Training is provided both directly by the charity and through its national network of registered tutors. For information about courses, or becoming a trainer, please email us at dtc@signalong.net or call 0845 450 8427.

For information about Signalong resources please go to our website at www.signalong.org.uk or call 0845 450 8422 to request a catalogue



communicating choices for more than 20 years