

# Signs of Spring

**SPRING**



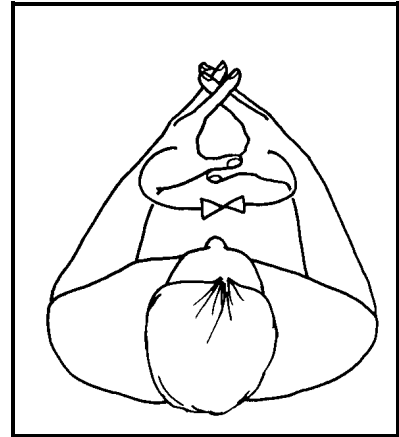
Working bunched hand (palm back, pointing in) behind supporting flat hand (palm back, pointing in); working hand swivels at wrist to open hand (palm back, pointing up).

**HARE**



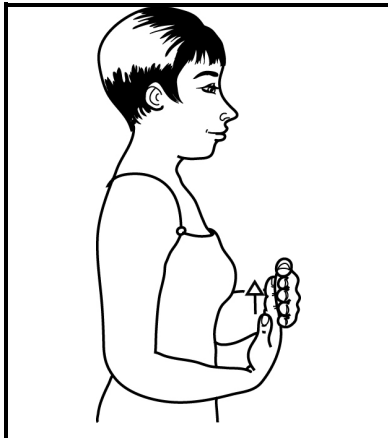
"N" hands (palms forward, pointing up) at either side of head, move up and forwards.

**NEST**



Open hands (pointing forwards/in), fingers interlaced, separate and bend back from wrists until heels of hands touch, changing to cupped open hands.

**NEW**



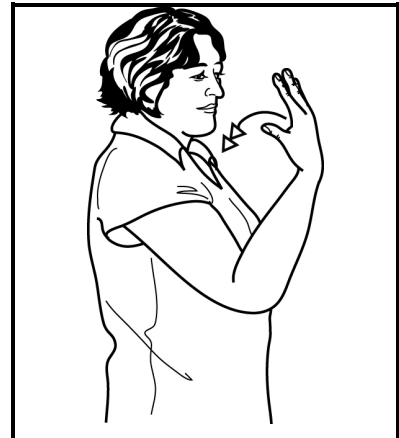
Working flat hand (palm back, pointing up) below and behind supporting flat hand (palm back, pointing in). Working hand moves up so that backs of fingers brush against supporting palm.

**GROW**



Working bunched hand (palm back, pointing up) behind supporting flat hand (palm back, pointing in); working hand moves up slowly changing to open hand.

**WIND**



Working open hand (palm back, pointing up) in front and to the side of face, bends at wrist to palm down, pointing back several times. Use two hands for emphasis.

**©SIGNALONG**



**The Signalong Group**  
**Stratford House Waterside Court**  
**Rochester Kent ME2 4NZ**

0845 450 8422

[www.signalong.org.uk](http://www.signalong.org.uk)

Communication skills for children and adults with  
 speech, language and communication needs

Signing and visual communication resources  
 Training Advice

# Signs of Spring

March sees the beginnings of renewal in the world, with early flowers bursting open, trees budding and mating activity in the animal kingdom. New concepts are best learned in the real context, so it's a great opportunity to get out and about, to see and learn new things and just to enjoy the experience of being outside.

Signing is a simple way of reinforcing a verbal message, and in most cases there is a visual connection between the sign and the concept being conveyed. By using signs consistently a link can be established with the words and the whole communication process becomes easier and the world becomes a more interesting place.

Signalong has the largest illustrated sign vocabulary in Britain, adapted from British Sign Language for the needs and abilities of children and adults with speech, language and communication needs.

Signalong is made accessible by its approach to how the signs are formed, analysing them for handshape, orientation, placement and movement, supporting the descriptions with clear line drawings. This method enables families and practitioners to produce accurate signs relevant to their situation. Special vocabularies can be compiled on request.

The Signalong Group is a charity (no 1039788) which provides resources, training and free advice, and readily works with others in the field to promote communication skills for children and adults with speech, language and communication needs.

Training is provided both directly by the charity and through its national network of registered tutors. For information about courses, or becoming a trainer, please contact Sarah on 0845 450 8424, email [sbissett@signalong.org.uk](mailto:sbissett@signalong.org.uk).

For information about Signalong resources please go to our website at [www.signalong.org.uk](http://www.signalong.org.uk) or call 0845 450 8422 to request a catalogue